



# POWER AND MODULAR SOLUTIONS

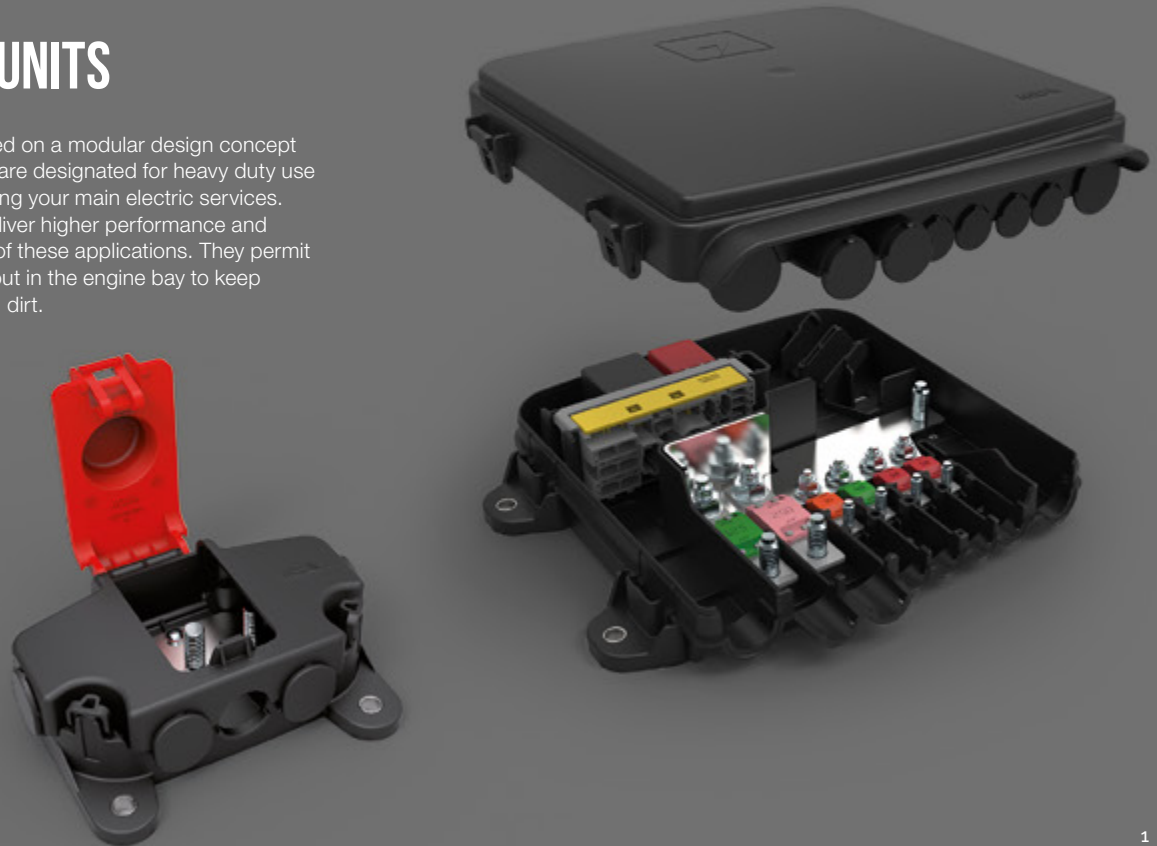
2017





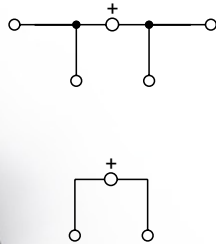
# POWER DISTRIBUTION UNITS

Our PDU were developed based on a modular design concept for the utmost versatility. They are designated for heavy duty use distributing power and protecting your main electric services. They have been updated to deliver higher performance and respond to the new demands of these applications. They permit a simplified wiring harness layout in the engine bay to keep harnesses safe from water and dirt.



# JUMP START NODE

This product provides a solution for rational safe multi-way electric power distribution. It also features an optional threaded middle pin which serves as a safe power connection to start up and/or charge external electric devices such as batteries or other equipment. This component has a special design that allows it to be adapted to each application.



# 1 WAY HOLDERS

Individual fuse holders for Bolt Fuses with an increased range of wire diameter for high current protection.

# MEGAVAL HOLDER WP



**MEGACOMPACT  
HOLDER**



**MIDIVAL  
HOLDER**



**MEGAVAL  
HOLDER**



## **EXAMPLE OF A MULTIPLE FUSE BLOCK**

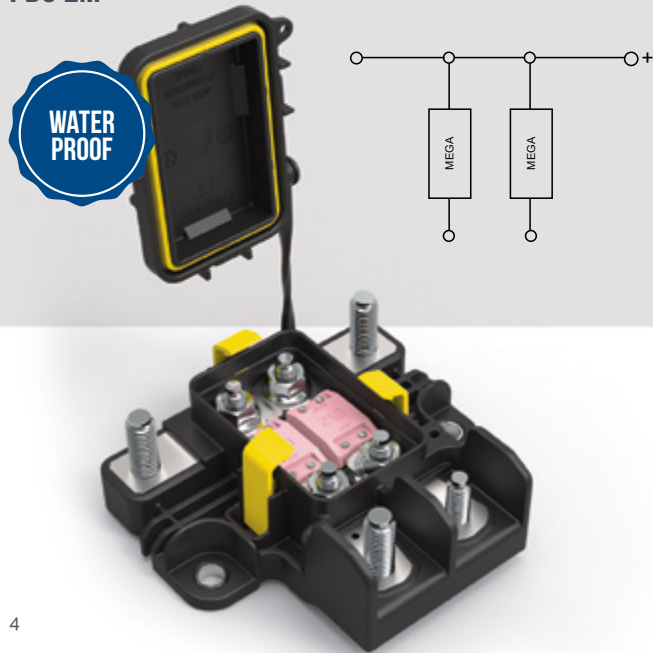
This new generation of fuse holders can be used stand-alone or can be clipped together to form a multiple fuse block with bus bar.



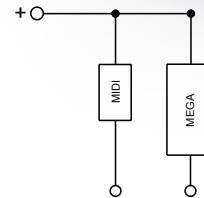
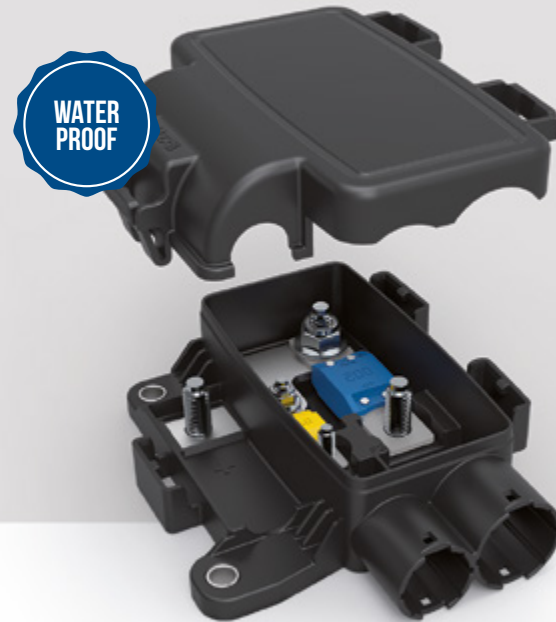
# PDU

Designed for both light vehicles and heavy-duty applications, these PDU can accommodate MidiVal and MegaVal fuses. Their compact shape and multiple fastening points make them versatile and easy to use.

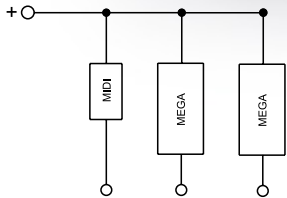
## PDU 2M



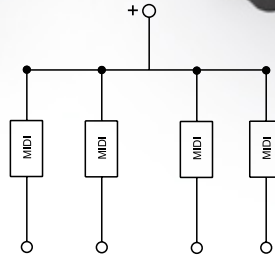
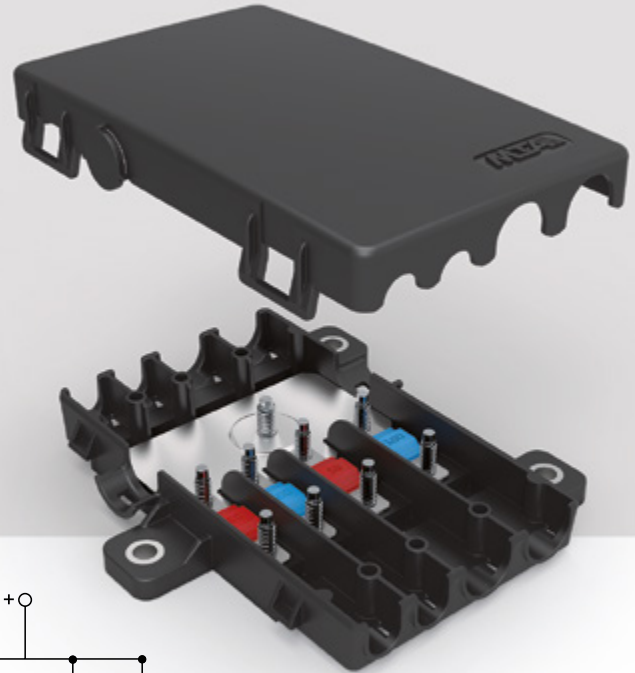
## PDU 2



# PDU 3



# PDU 4



# MEC 25

PCB based Modular Electrical Center with customizable electrical scheme. Accepts 6 MiniVal, 3 MidiVal, and 7 MaxiCompact fuses (including 2 spares). The fuse compartment is sealed to protect fuses from dust and water.

## MAIN FEATURES:

- Pressfit terminals
- Gore-Tex vent provides a barrier to water and dust though allowing breathing and internal moisture diffusion
- MEC can be fixed in flat, inclined or vertical position
- Cover tethered to the body so it won't be misplaced
- Positive touch cover fixing system
- Optional un-fused exit that can provide power distribution to circuits that can't be fused.



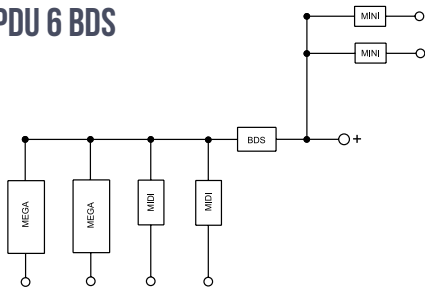


# CONFIGURABLE PDU

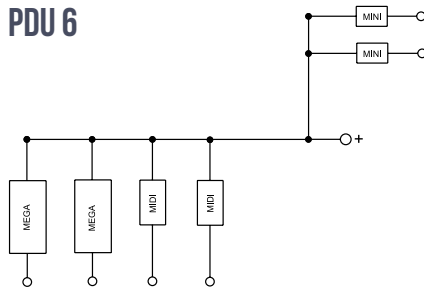
These PDU offer a high level of flexibility: They can house electronic BDS and different combinations of bussed MidiVal and MegaVal fuses (up to 4 MidiVal and 2 MegaVal). They can also accommodate 5 MiniVal fuses or any fuse and relay holder module in the MTA range. A seal mounted in the cover assures protection from dust and water.



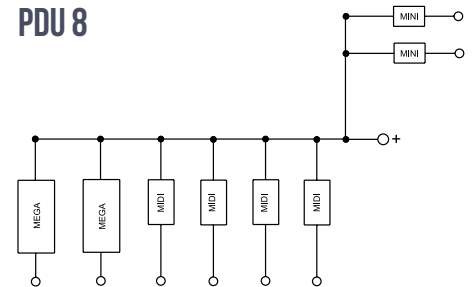
### PDU 6 BDS



### PDU 6



### PDU 8

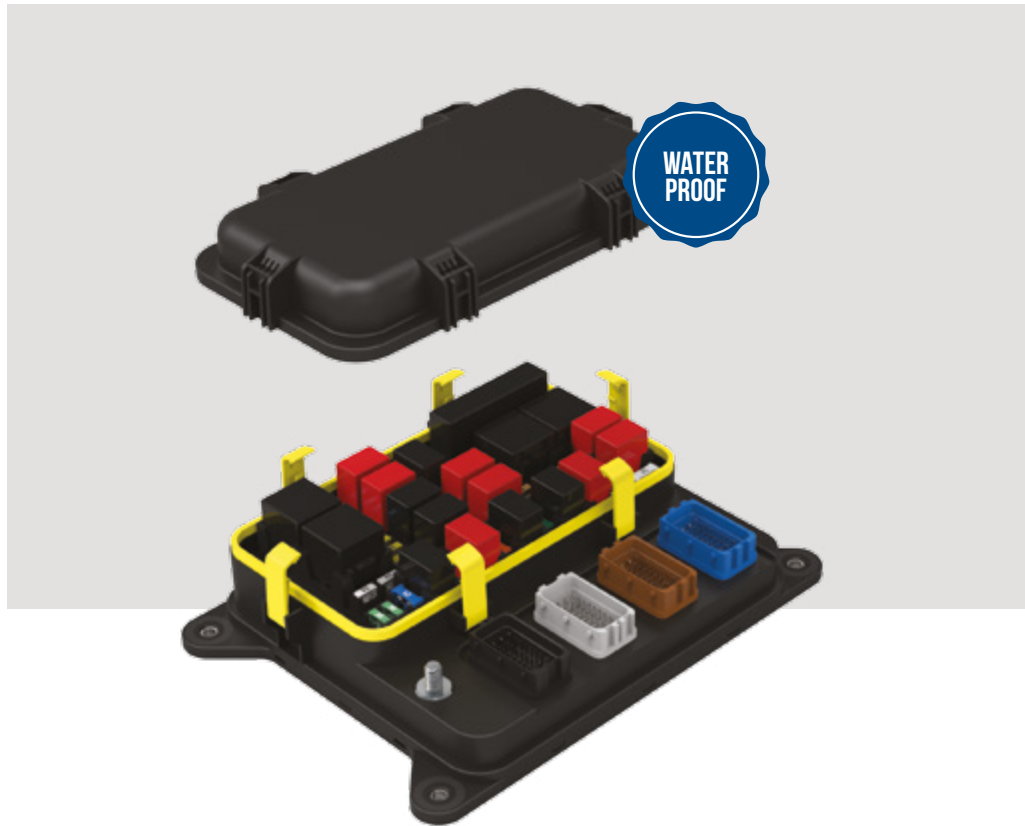


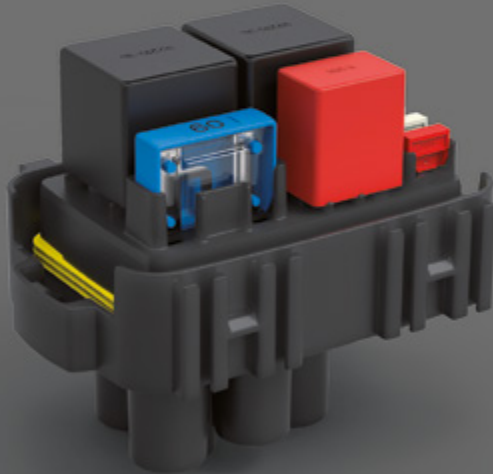
# MEC 97

PCB based Modular Electrical Center fully configurable contents and electrical scheme. Fuses and Relays are protected from dust and water in a sealed compartment.

## MAIN FEATURES:

- Pressfit terminals
- Gore-Tex vent provides a barrier to water and dust though allowing breathing and internal moisture diffusion
- MEC can be fixed in flat, inclined or vertical position
- Positive touch cover fixing system
- 2 power feeds and 4 24-pin color-coded output connectors
- Optional: module to convert CAN BUS messages into digital output.

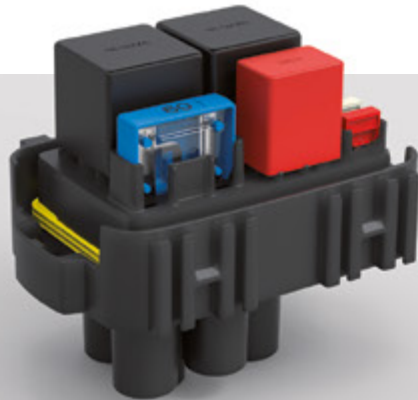




## WATER PROOF MODULES

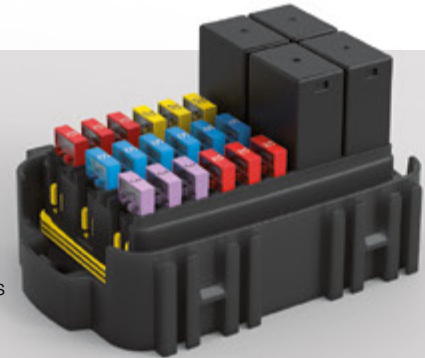
Vehicles operating around water and mud need advanced environmental protection. Our range of watertight modules has been developed to satisfy this need. All terminals are equipped with a grommet, and a radial silicone seal housed between the module and its cover keeps the modules secured tightly. Modularity is the core philosophy behind these products: All modules can be combined with one other via the four mounting points, and they can all accommodate fuses, relays, or both.

## MODULE 0301491



CONTENTS:  
6 MiniVal Fuses  
1 MaxiVal Fuse  
2 Maxi Relay  
1 Micro Relays

## MODULE 0301370



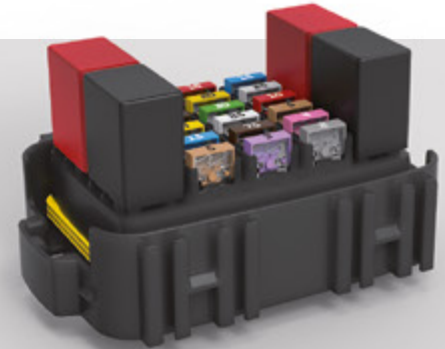
CONTENTS:  
30 MiniVal Fuses or  
10 Micro 280 Relays  
Mixed Relays and MiniVal Fuses

## MODULE 0301569

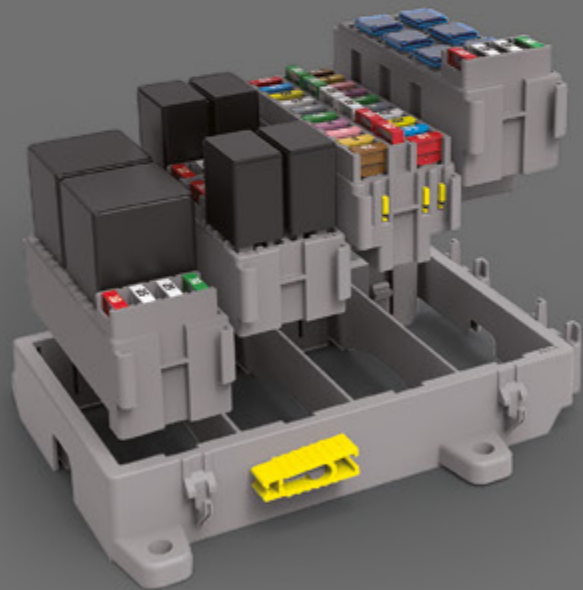
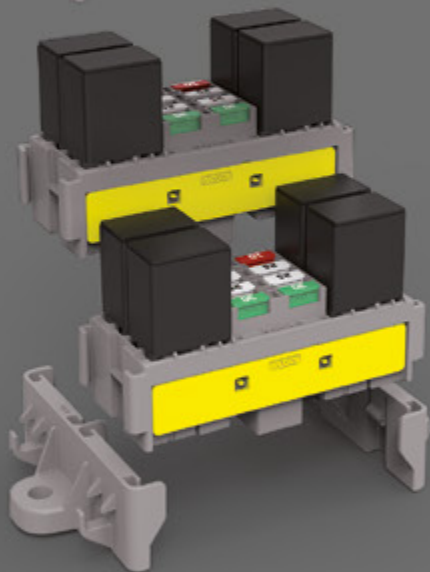


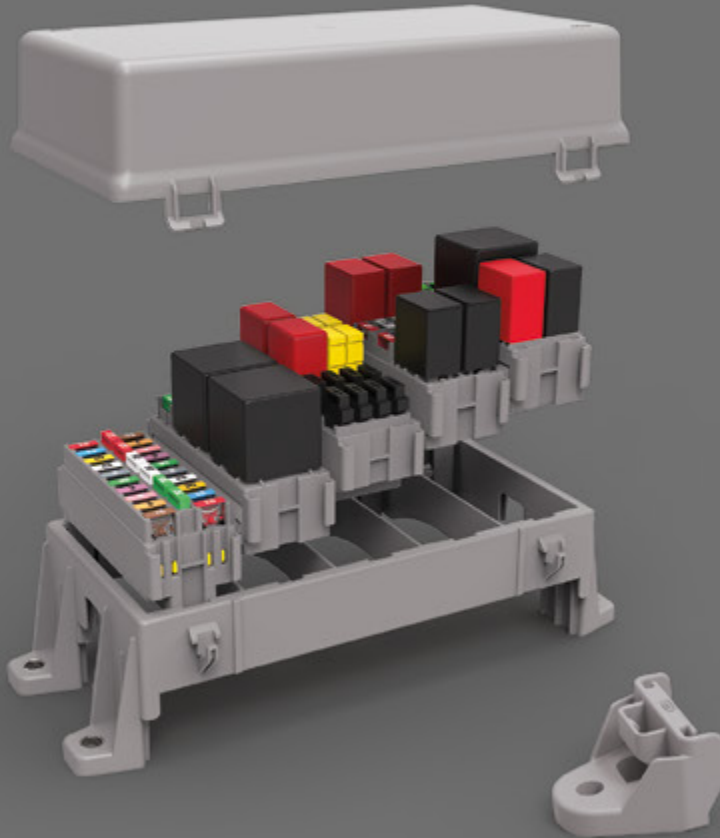
CONTENTS:  
6 MiniVal Fuses  
1 MaxiVal Fuse  
1 Mini Relay  
3 Micro Relays

## MODULE 0301568



CONTENTS:  
18 MiniVal Fuses  
1 MaxiVal Fuse  
4 Micro Relays



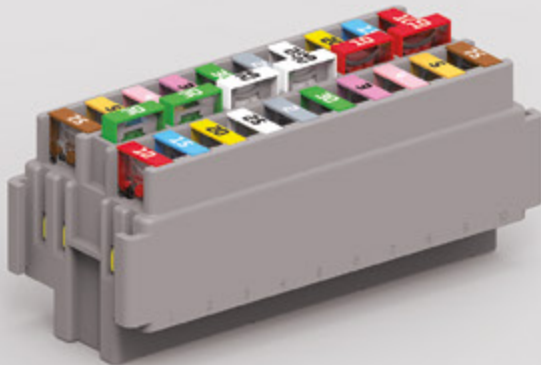


## FRAMES, BRACKETS, COVERS & MODULES

We offer 14 modules and a variety of frames, covers, and brackets to build a wide range of flexible modular solutions for holding fuses, relays, or diodes. All of these products are equipped with secondary locks to guarantee maximum safety and high performance. They are built to resist stress and provide reliable technology.

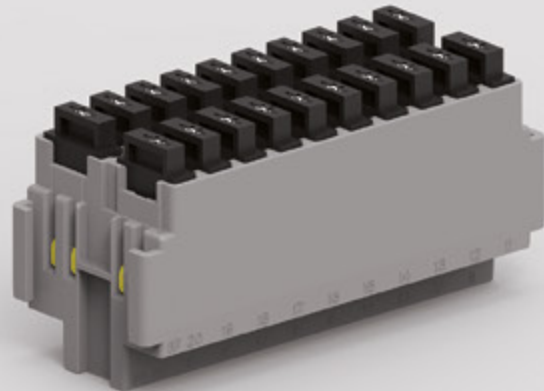
## MODULE 0301460

CONTENTS:  
20 MiniVal Fuses



## MODULE 0301640

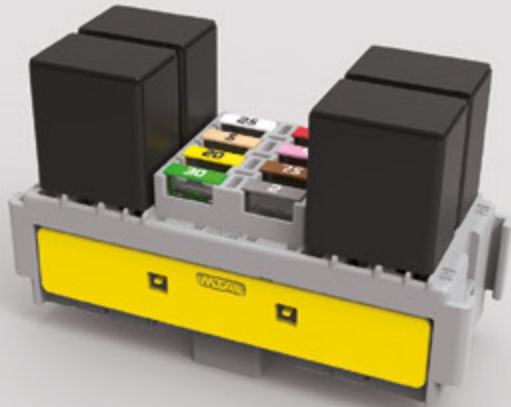
CONTENTS:  
20 Diodes / MiniVal Fuses





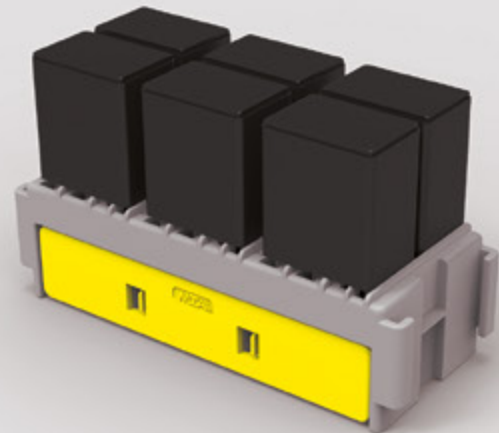
## MODULE 0301564

CONTENTS:  
8 MiniVal Fuses  
4 Micro Relays



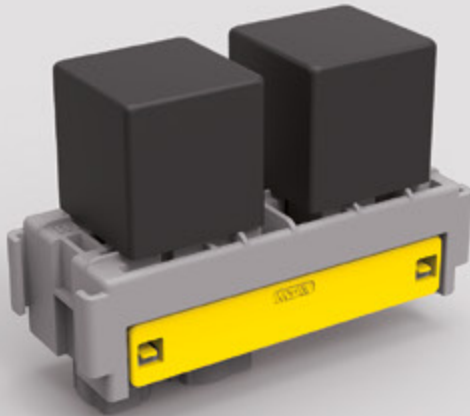
## MODULE 0301484

CONTENTS:  
6 Micro Relays



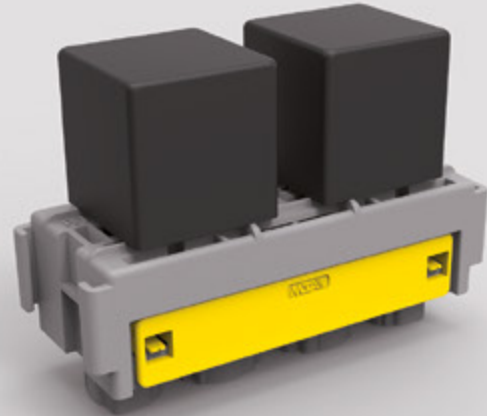
## MODULE 0301494

CONTENTS:  
1 Maxi Relay  
1 Mini Relay



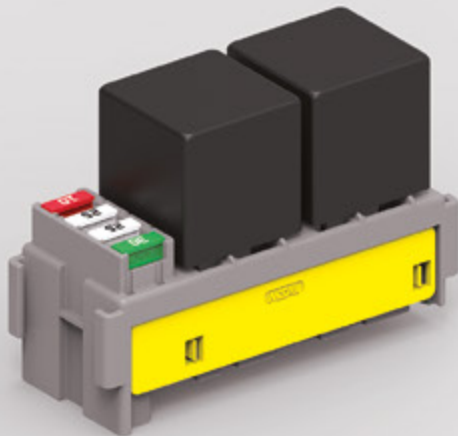
## MODULE 0301660

CONTENTS:  
2 Maxi Relays



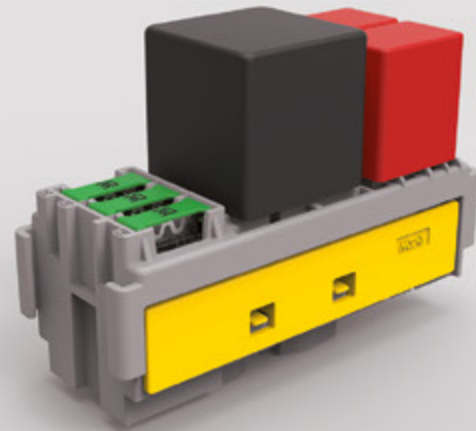
## MODULE 0301504

CONTENTS:  
4 MiniVal Fuses  
2 Mini Relays



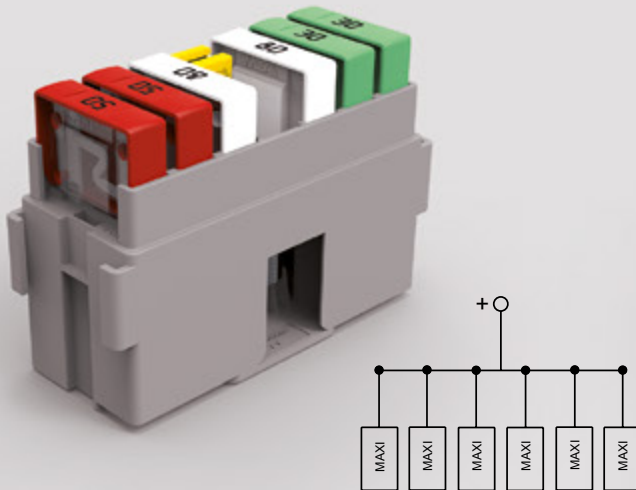
## MODULE 0301695

CONTENTS:  
3 MaxiCompact Fuses  
1 Maxi Relay  
2 Micro Relays



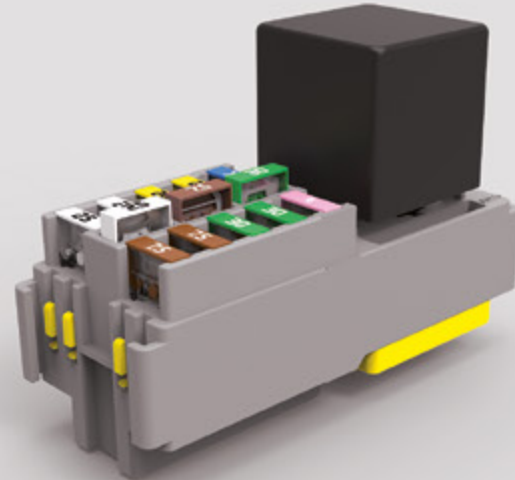
## MODULE 0301470

CONTENTS:  
6 MaxiVal Fuses



## MODULE 0301510

CONTENTS:  
10 MiniVal Fuses  
1 Maxi Relay



## MODULE 0301600

CONTENTS:  
3 MaxiVal Fuses  
6 UniVal Fuses



## MODULE 0301690

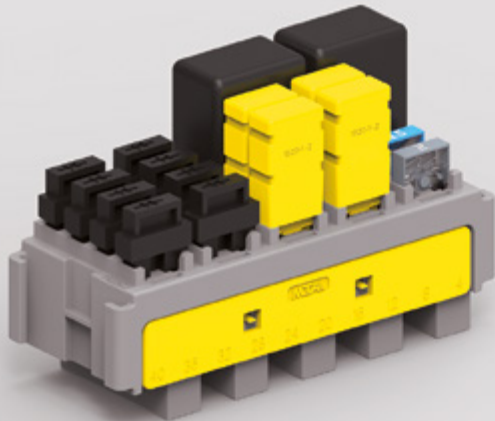
CONTENTS:  
4 MiniVal Fuses  
6 Type A1 S Fuses



# MODULE 0301698

## CONTENTS:

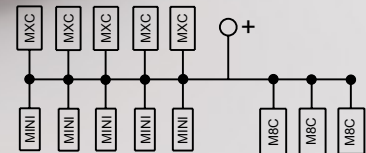
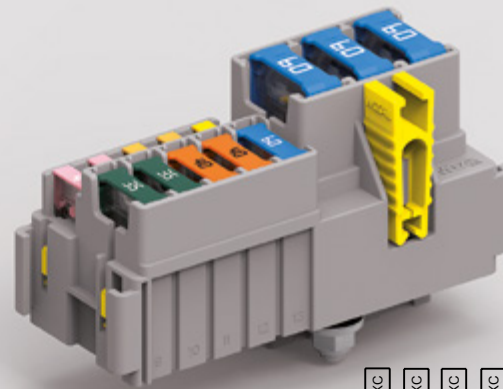
20 MiniVal Fuses / 20 Circuit Brakers / 20 Diodes / 6 Micro 280 Relays  
Mixed MiniVal Fuses- Diodes - Circuit Brakers



# MODULE 0301697

## CONTENTS:

5 MiniVal Fuses  
5 MaxiCompact Fuses  
3 M8Compact Fuses







Advanced Automotive Solutions

ITALY  
BRAZIL  
POLAND  
SLOVAKIA  
USA  
INDIA  
CHINA  
MEXICO  
MOROCCO

[www.mta.it](http://www.mta.it)

Ref. 9951274



8 010266 208128

