



# AUTOMOTIVE SOLUTIONS

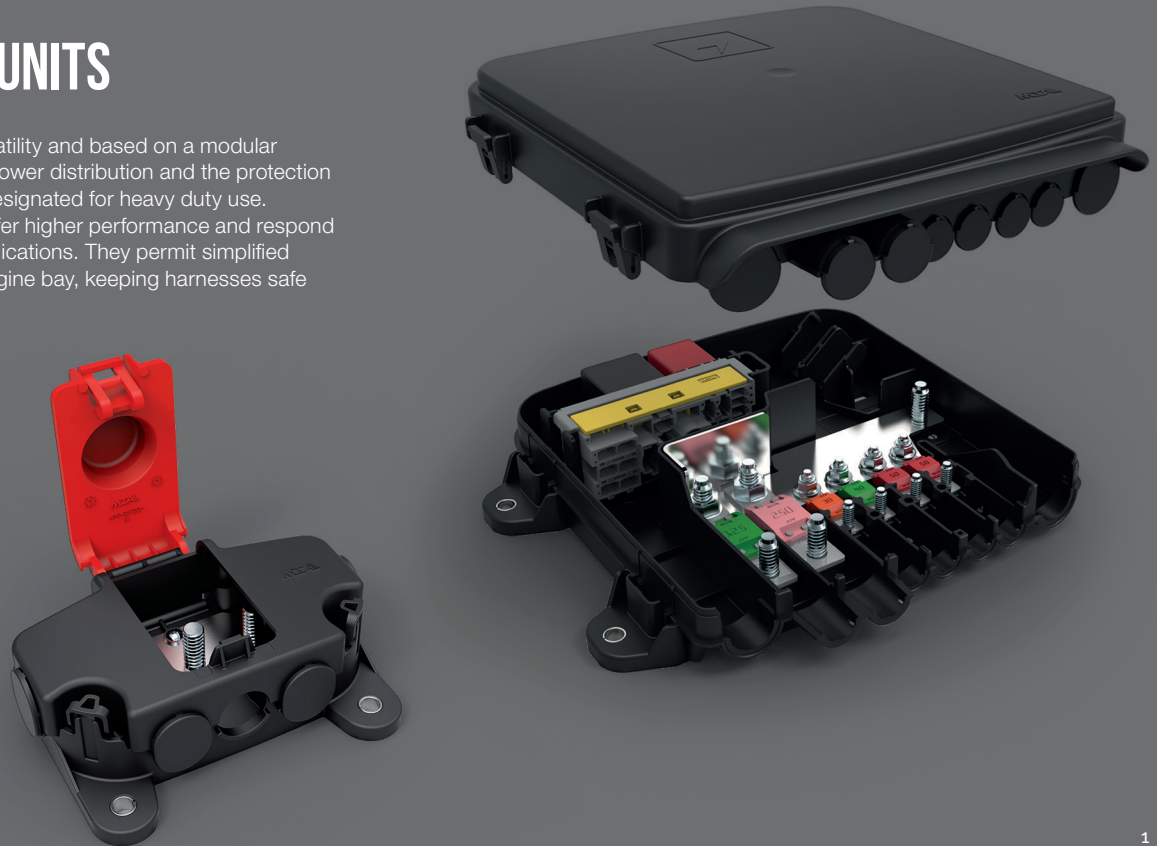
*Our experience, your advantage*





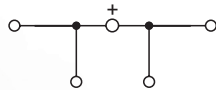
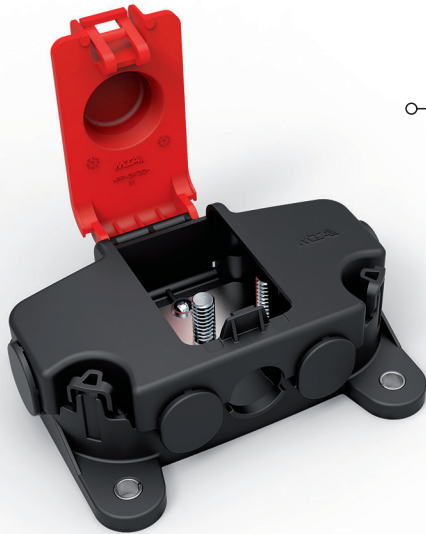
# POWER DISTRIBUTION UNITS

Developed for the utmost versatility and based on a modular design concept, our PDU for power distribution and the protection of main electric services are designated for heavy duty use. They have been renewed to offer higher performance and respond to the new needs of these applications. They permit simplified wiring harness layout in the engine bay, keeping harnesses safe from water and dirt.

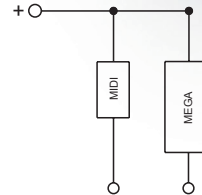


# JUMP START NODE

This product provides a solution for rational and safe multi-way electric power distribution. It also features, as an optional, a threaded middle pin providing a safe power connection to start up and/or charge external electric devices, such as batteries or other equipments. The component has a special design to adapt its configuration to each application.



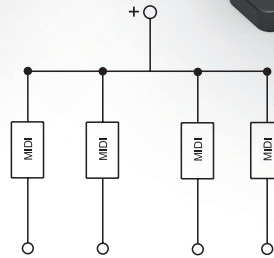
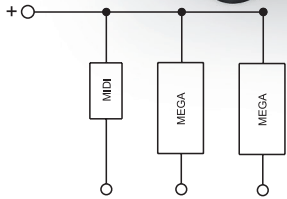
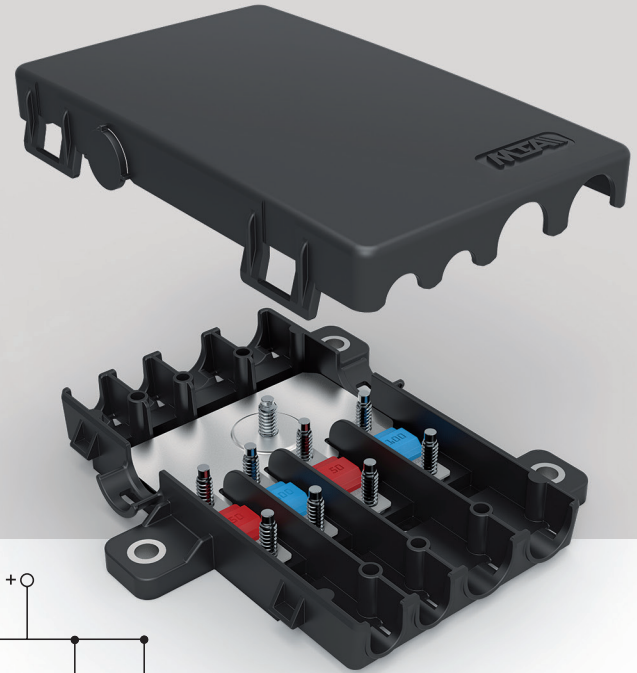
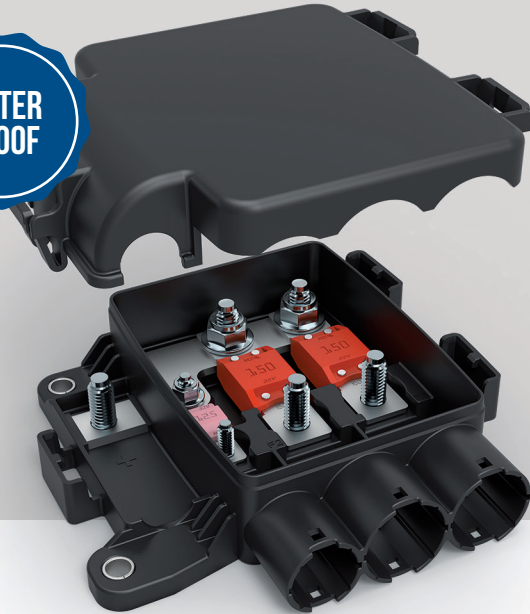
# 2 - 3 - 4 - WAY PDU



These PDU can accommodate a variable number of fuses and feature different locking systems for fastening to the vehicle, so that they can be installed in several different positions making assembly easier for vehicle manufacturers.

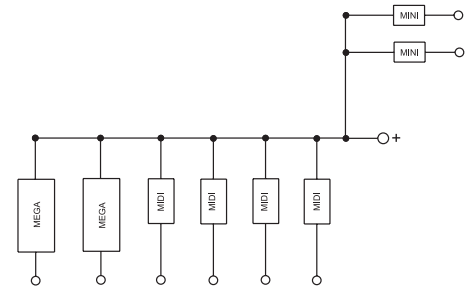
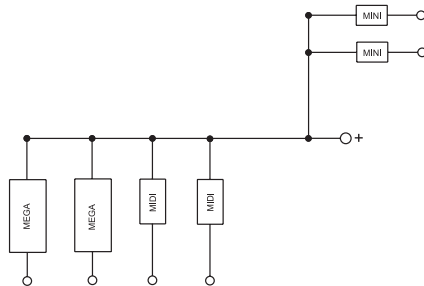
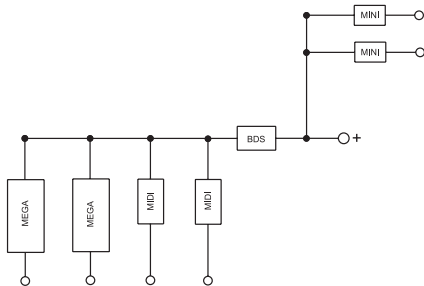
Designed for both light vehicles and heavy-duty applications, they can accommodate MidiVal and MaxiVal fuses capable of protecting services with currents up to 120 Amps.

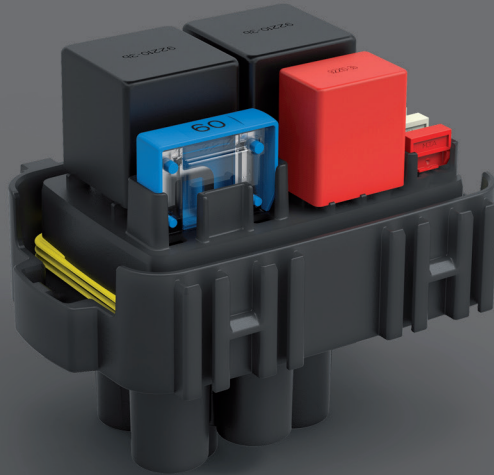
**WATER  
PROOF**



# CONFIGURABLE PDU

These PDU offer high level of flexibility: they can house electronic BDS, different combination of bussed MidiVal and MegaVal fuses (up to 4 MidiVal and 2 MegaVal). They can also accommodate 5 MiniVal fuses and any fuse and relay holder module in the MTA range. A seal, mounted in the cover, assures water protection.





## WATER PROOF MODULES

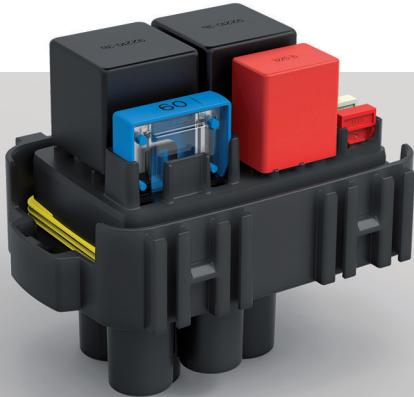
Vehicles operating in the presence of water and mud need very high environmental protection. Our range of watertight modules has been developed to satisfy this need. The tightness of the modules is guaranteed by a radial silicone seal housed between the module and its cover, while all terminals are equipped with a grommet.

Modularity is the core philosophy behind these products: all modules, in fact, can be combined with other similar modules, thanks to the four mounting points and can accommodate fuses, relays, or both together.

## MODULE 0301491



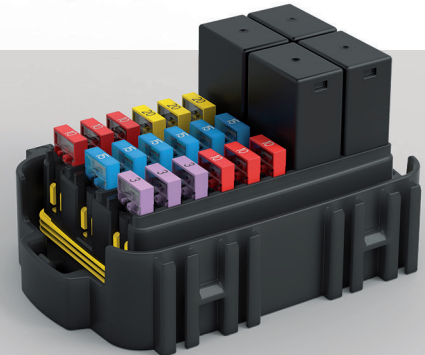
CONTENTS:  
6 MiniVal Fuses  
1 MaxiVal Fuse  
2 Maxi Relays  
1 Micro Relay



## MODULE 0301370



CONTENTS:  
30 MiniVal Fuses or  
10 Micro 280 Relays  
Mixed Relays and MiniVal Fuses

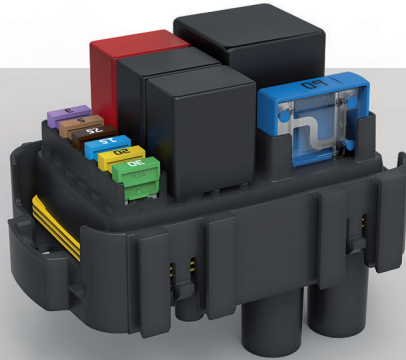




## MODULE 0301569



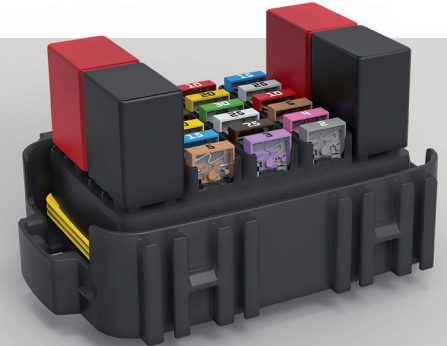
CONTENTS:  
6 MiniVal Fuses  
1 MaxiVal Fuse  
1 Mini Relay  
3 Micro Relays

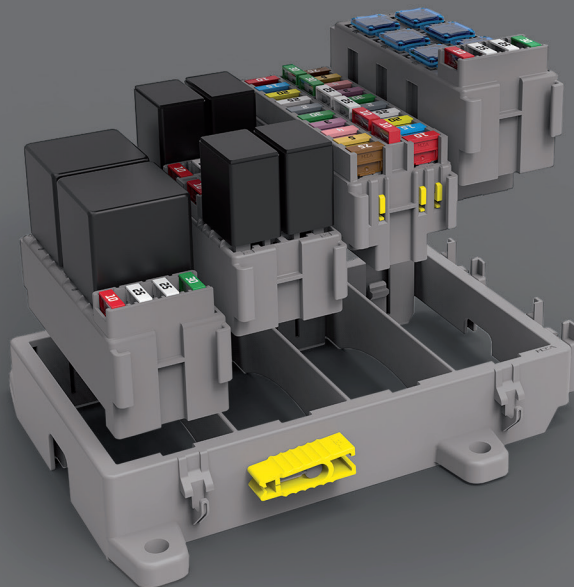
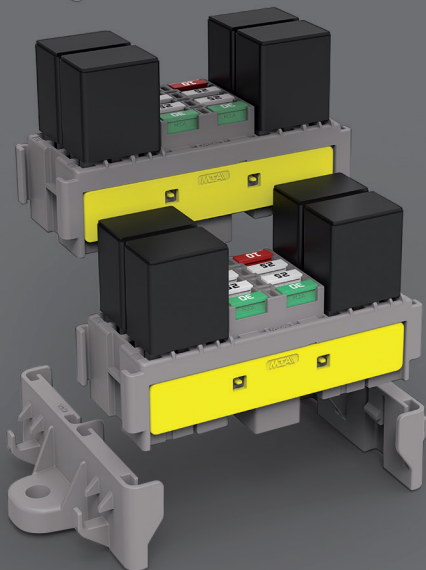
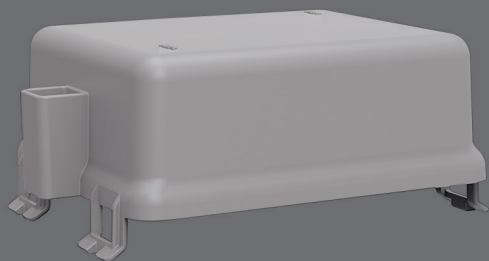


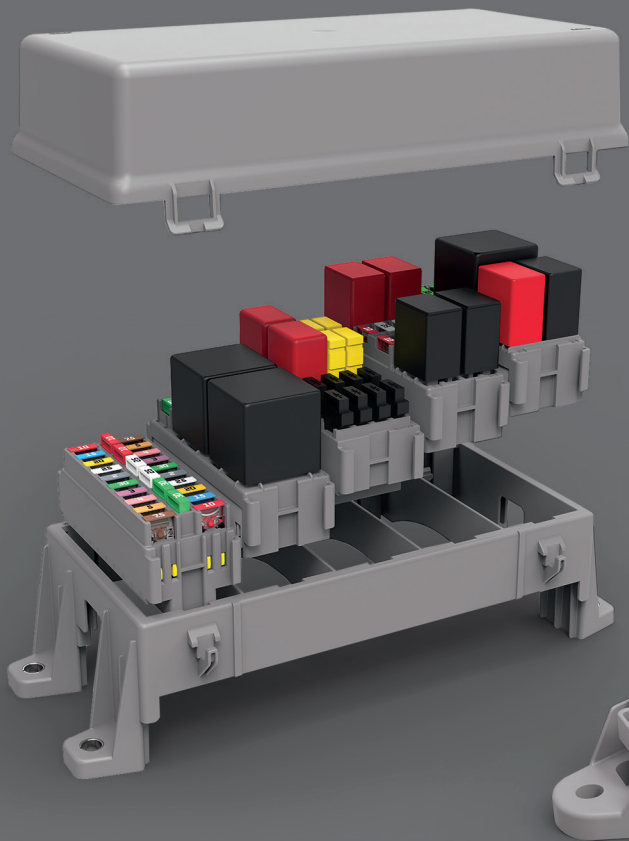
## MODULE 0301568



CONTENTS:  
18 MiniVal Fuses  
4 Micro Relays



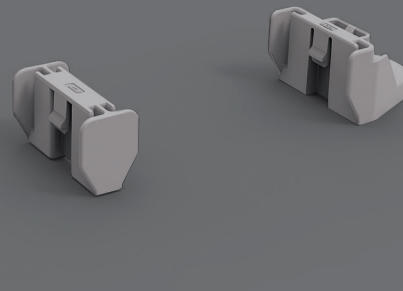




## FRAMES, BRACKETS, COVERS & MODULES

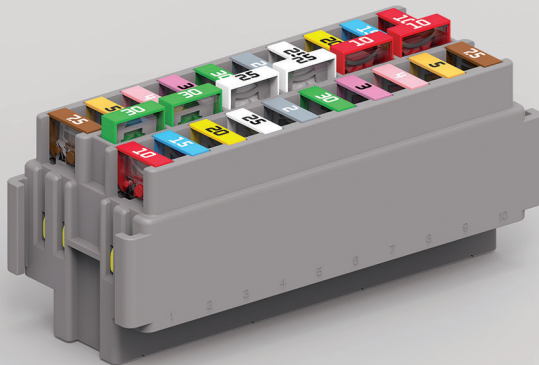
14 modules and many different frames, covers and brackets to build a wide range of modular and flexible solutions, capable to hold fuses, relays or diodes.

All provided with secondary locks, these modules guarantee maximum safety and high performance. They are built to successfully resist stress and to provide trusted technology.



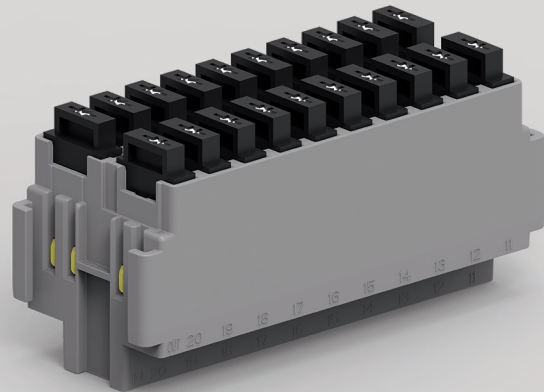
## MODULE 0301460

CONTENTS:  
20 MiniVal Fuses



## MODULE 0301640

CONTENTS:  
20 Diodes



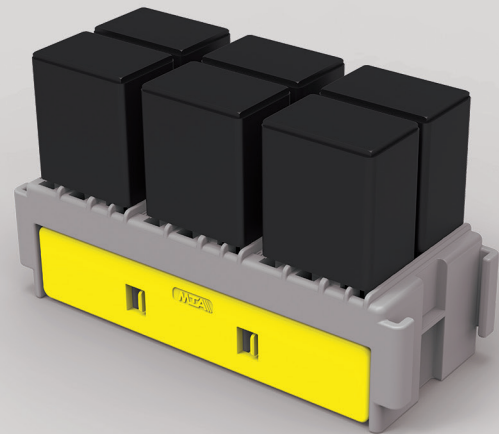
## MODULE 0301564

CONTENTS:  
8 MiniVal Fuses  
4 Micro Relays



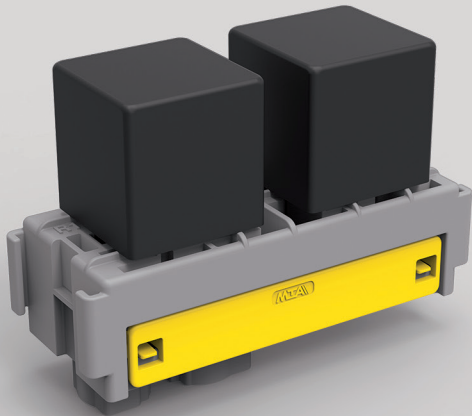
## MODULE 0301484

CONTENTS:  
6 Micro Relays



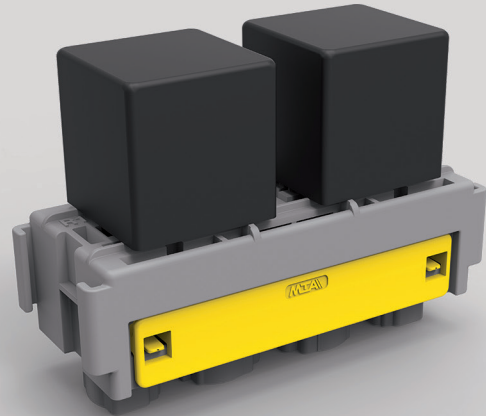
## MODULE 0301494

CONTENTS:  
1 Maxi Relay  
1 Mini Relay



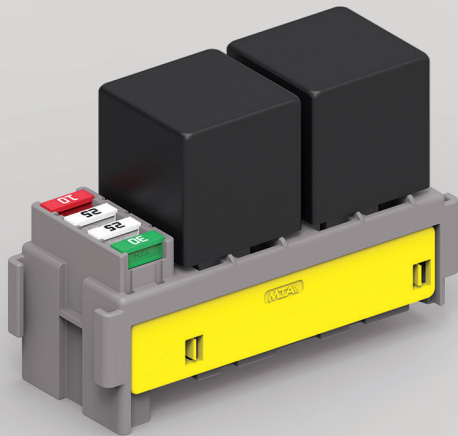
## MODULE 0301660

CONTENTS:  
2 Maxi Relays



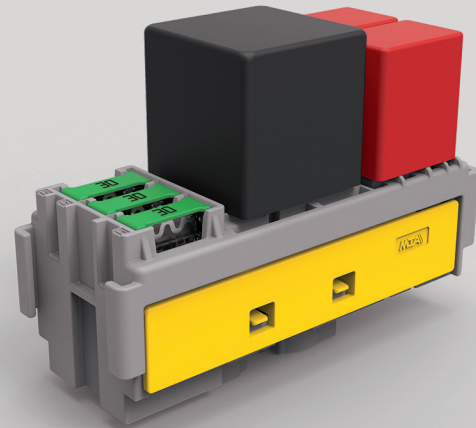
## MODULE 0301504

CONTENTS:  
4 MiniVal Fuses  
2 Mini Relays



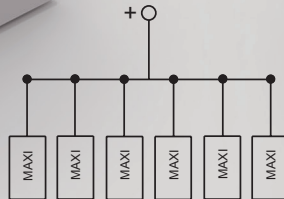
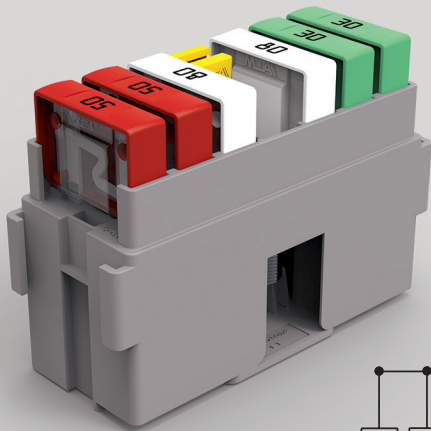
## MODULE 0301695

CONTENTS:  
3 MaxiCompact Fuses  
1 Maxi Relay  
2 Micro Relays



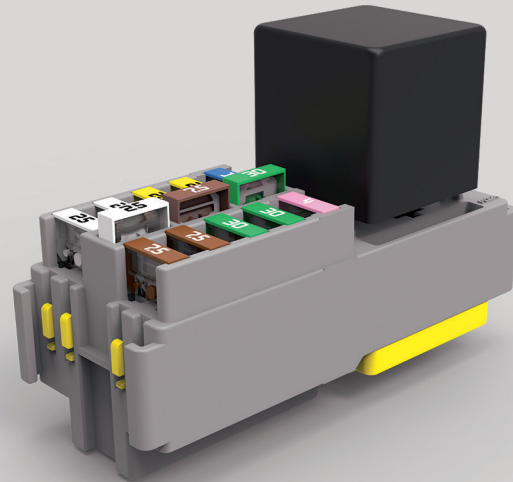
## MODULE 0301470

CONTENTS:  
6 MaxiVal Fuses



## MODULE 0301510

CONTENTS:  
10 MiniVal Fuses  
1 Maxi Relay





## MODULE 0301600

CONTENTS:  
3 MaxiVal Fuses  
6 UniVal Fuses



## MODULE 0301690

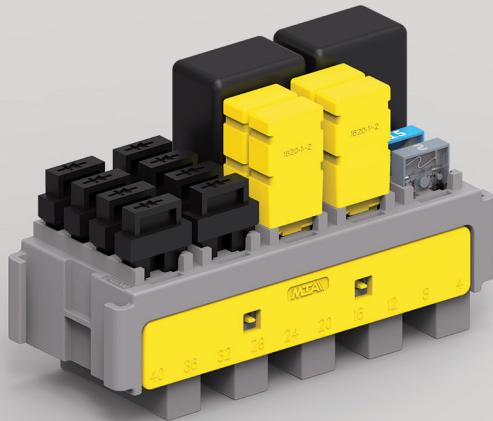
CONTENTS:  
4 MiniVal Fuses  
6 Type A1 S Fuses



# MODULE 0301698

## CONTENTS:

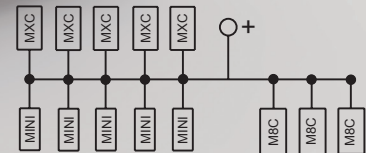
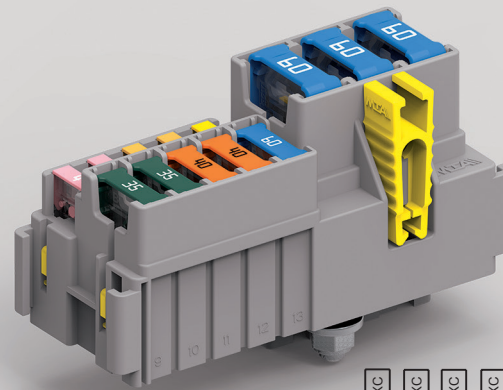
20 MiniVal Fuses / 20 Circuit Breakers / 20 Diodes / 6 Micro 280 Relays  
Mixed MiniVal Fuses- Diodes - Circuit Breakers



# MODULE 0301697

## CONTENTS:

5 MiniVal Fuses  
5 MaxiCompact Fuses  
3 Maxi 8C Fuses







Advanced Automotive Solutions

**HEADQUARTERS**

MTA S.p.A - Italy

**BRANCHES**

Brazil  
China  
India  
Mexico  
Poland  
Slovakia  
USA

[mta.it](http://mta.it)

Ref. 9951274



8 010266 208128

