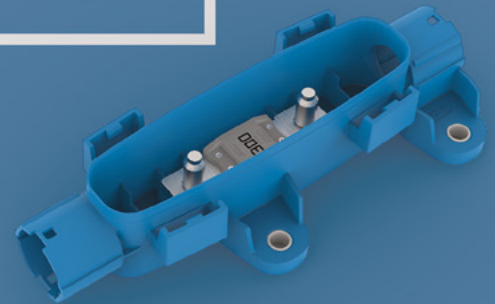




# MEDIUM VOLTAGE SOLUTIONS



# 48 V FUSES, POWER DISTRIBUTION UNITS AND CONNECTORS

For some years now, MTA has been developing and producing components suitable for 48 V electrical architectures to support the most energy-demanding systems.

A dedicated team has identified all possible changes associated with these architectures, creating a range of fuses, fuse holders, power distribution boxes, and connectors.



Read more about MTA power distribution units and fuses on [www.mta.it/en/electric-products](http://www.mta.it/en/electric-products)



## M8COMPACT®

Silver plated copper

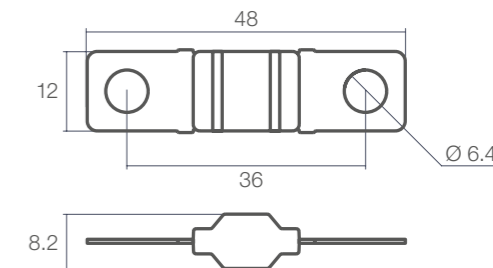
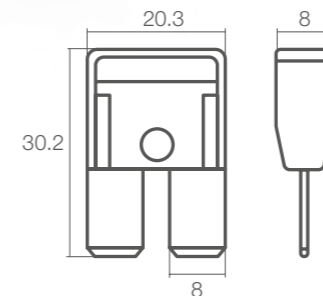
30 A	Light green
40 A	Orange
50 A	Red
60 A	Blue
70 A	Brown
80 A	Black
100 A	Violet



## MIdiVAL®

Tin plated copper

100 A	White
125 A	White
150 A	White
175 A	White



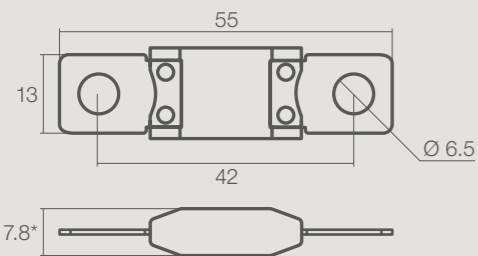
NOTE: dimensions are in mm.

**MEGACompact®**

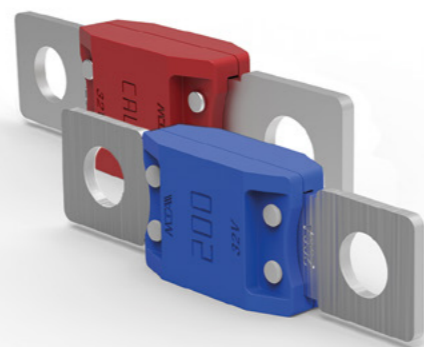
Tin plated copper



- 80 A ■ Red
- 100 A ■ Yellow
- 125 A ■ Green
- 150 A ■ Orange
- 175 A ■ White
- 200 A ■ Blue
- 225 A ■ Beige
- 250 A ■ Pink
- 300 A ■ Grey
- CAL.5 ■ Black



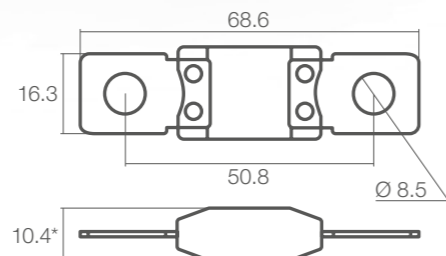
\*200-300 A and CAL.5: 8.2 mm



**MEGAVAL®**

Tin plated copper

- 100 A ■ Yellow
- 125 A ■ Green
- 150 A ■ Orange
- 175 A ■ White
- 200 A ■ Blue
- 225 A ■ Beige
- 250 A ■ Pink
- 300 A ■ Grey
- 400 A ■ Violet
- 500 A ■ Brown



\*200-500 A: 10.6 mm

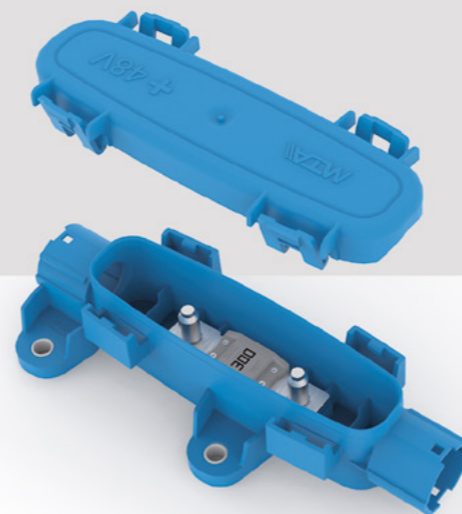
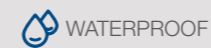
**POWERVAL®**

Tin plated copper

- CAL.3 ■ Red
- CAL.4 ■ Brown
- CAL.5 ■ Wheat grey

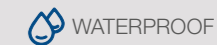
**1-WAY FUSE HOLDER**

Accepts 1 51 mm pitch MegaVal



**PDU**

Accepts 1 36 mm pitch MidiVal and 1 56 mm pitch MegaVal/1 shunt

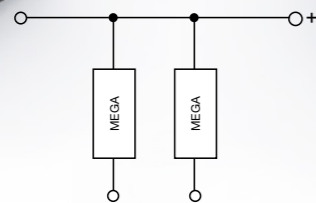
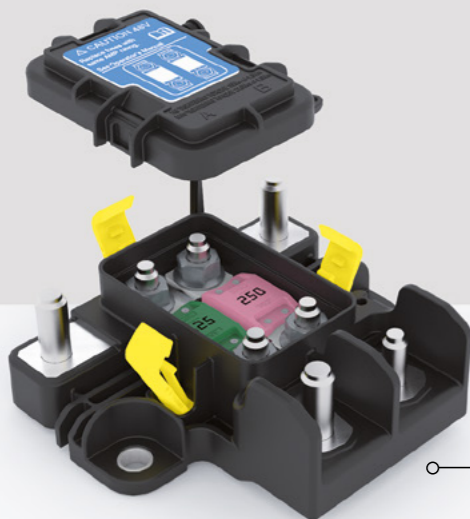


NOTE: the power distribution units are supplied without fuses.

## PDU 2M


Accepts 2 51 mm pitch MegaVal

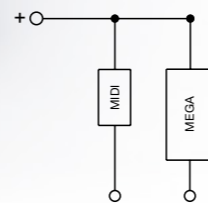
 WATERPROOF



## PDU 2


Accepts 1 36 mm pitch MidiVal and 1 51 mm pitch MegaVal/1 shunt

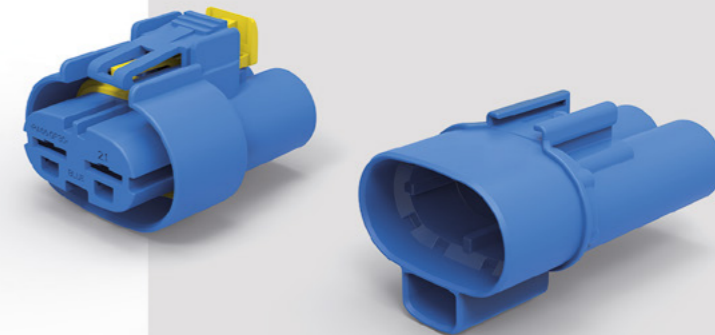
 WATERPROOF



## 2-WAY POWER

Male and female holders (with gasket). They accept MTA WP M800 and WP F800 terminals

 WATERPROOF



## 2,3,4-WAY POWER

Male and female holders (with gasket). They accept MTA WP M630 and WP F630E terminals; JPT WP M280 and WP F280 terminals

 WATERPROOF





Advanced Automotive Solutions

ITALY  
BRAZIL  
POLAND  
SLOVAKIA  
USA  
INDIA  
CHINA  
MEXICO  
MOROCCO

[www.mta.it](http://www.mta.it)

**DISCLAIMER** – Products, information, drawings, specifications and reference numbers (hereafter “contents”) discussed herein are for reference purposes only. All contents herein are provided on an “as is” basis, without warranties of any kind. The contents discussed herein remain the sole and exclusive property of MTA S.p.A. and shall not be copied, translated in whole or in part without MTA S.p.A. prior written consent. No license of any patent, copyright, mask work, trademark or any other intellectual property right is granted under this document, by implication, estoppel or otherwise. Contents may be modified and changed by MTA S.p.A. without any notice. For updates or additional information about MTA products, please contact your nearest MTA office. All brand names, trademarks and registered trademarks belong to their respective owners.

**MEDIUM VOLTAGE SOLUTIONS**

Version 1.0

July 2020

